

**Single Leaf EI<sub>2</sub>90 / T90 Fire Resistant Acoustic Steel Door**

<b>Fire Protection</b>	<b>EI<sub>2</sub>90 / T90</b>	<b>tested acc. to EN 1634-1</b>
<b>Smoke Control (optional)</b>	<b>S<sub>a</sub>, S<sub>200</sub> / RS</b>	<b>tested acc. to EN 1634-3</b>
<b>Self-Closing (optional)</b>	<b>up to C5</b>	<b>tested acc. to EN 1191</b>
<b>Sound Insulation</b>	<b>up to R<sub>w,P</sub> 54 dB</b>	<b>tested acc. to EN ISO 10140-2</b>

**Certified in accordance with DIN EN 16034 / 14351-1 / 13241**

**General Building Approval as T90-1 (-RS) -FSA acc. to DIN 4102-5 / DIN 18095**

**Optional Audited Additional Functions**

- Burglar Protection	<b>RC2/RC3</b>	tested acc. to EN 1627
- Bullet Resistance	<b>FB4/FB6</b>	tested acc. to EN 1522
- Air Tight	<b>up to class 4</b>	tested acc. to EN 1026
- Rain- and Fire-Water Tight	<b>Klasse 6A</b>	tested acc. to EN 1027
- Wind load Resistance	<b>up to class C5</b>	tested acc. to EN 12211
- Blast Resistance	<b>up to 20 kPa</b>	tested acc. to EN 13124-1
- Explosion Protection	<b>up to Zone 1/21</b>	acc. to EN 1127-1 or ATEX 2014/34/EU
- Stainless Steel		

**Range of Dimension**

**Range of Dimension for Doors**      **Width** from 625 mm to 1500 mm  
**Height** from 1750 mm to 3000 mm

**Range of Dimension for Hatches**      **Width** from 625 mm to 750 mm  
**Height** from 500 mm to 1750 mm

**Technical Specification and Tender Text**

<b>Product:</b>	<b>EI<sub>2</sub>90 / T90 single leaf fire resistant acoustic steel door brand Buchele tested acc. to EN 1634-1 and EN ISO 10140-2</b>
<b>Door Type:</b>	<b>PLANE Line PL 901 BASIC</b>
<b>Sound Insulation R<sub>w,P</sub></b>	<b>54 dB</b>
<b>Structural Opening:</b>	<b>.... x .... mm</b>
<b>Door Leaf:</b>	Double-walled, planar 70 mm thick steel door leaf without hinge embossing, three sides rebated with thick rebate. Without bottom stop. Special insulating inserts fully laid-in and glued. Securing pin screwed in door leaf rebate. Duplex tow sealing system.
<b>Threshold:</b>	Threshold profile as barrier free hump sill. Surface galvanized and welded to the frame.
<b>Frame:</b>	3-sided circumferential rebated corner frame with visible black coated intumescent material in rebate. High-quality multi chamber sealing profile adjustable fixed in the three-sided groove.
<b>Hinges:</b>	Three-part, height adjustable construction hinges with hinge pin retention and ball bearing spacer ring for smooth door movement.

<b>Door Closer:</b>	Door closer system with standard arm acc. to EN 1154 silver coloured mounted on hinge side.								
<b>Fitting:</b>	Mortise lock with latch lever function acc. to EN 12209 (prepared for installation of a profile cylinder lock, provided by customer). Door handle set in acc. to EN 1906 fixed pivoted synthetic material black in U-shape with rounded short-plate.								
<b>Surface:</b>	Door leaf and frame galvanized und primed with 2K-PUR primer (Very High Solid) similar RAL 7035.								
<b>Installation:</b>	<table border="0"> <tr> <td>masonry</td> <td>≥ 175 mm</td> </tr> <tr> <td>concrete</td> <td>≥ 140 mm</td> </tr> <tr> <td>areated concrete</td> <td>≥ 200 mm</td> </tr> <tr> <td>mounting wall F60</td> <td>≥ 125 mm</td> </tr> </table>	masonry	≥ 175 mm	concrete	≥ 140 mm	areated concrete	≥ 200 mm	mounting wall F60	≥ 125 mm
masonry	≥ 175 mm								
concrete	≥ 140 mm								
areated concrete	≥ 200 mm								
mounting wall F60	≥ 125 mm								

**Alternative: PLANE Line PL 901 PREMIUM with flush mounted optics**

<b>Frame:</b>	3-sided circumferential rebated PLANE Line special corner frame for flush mounted optics on hinge side. With visible, black coated intumescent material in rebate. High-quality multi-chamber sealing profile adjustable fixed in the three-sided groove.
<b>Hinges:</b>	Three-part, height adjustable construction hinges with hinge pin retention and ball bearing spacer ring for smooth door movement.
<b>Door Closer:</b>	Slide rail door closer system acc. to EN 1154 silver coloured mounted on hinge side.

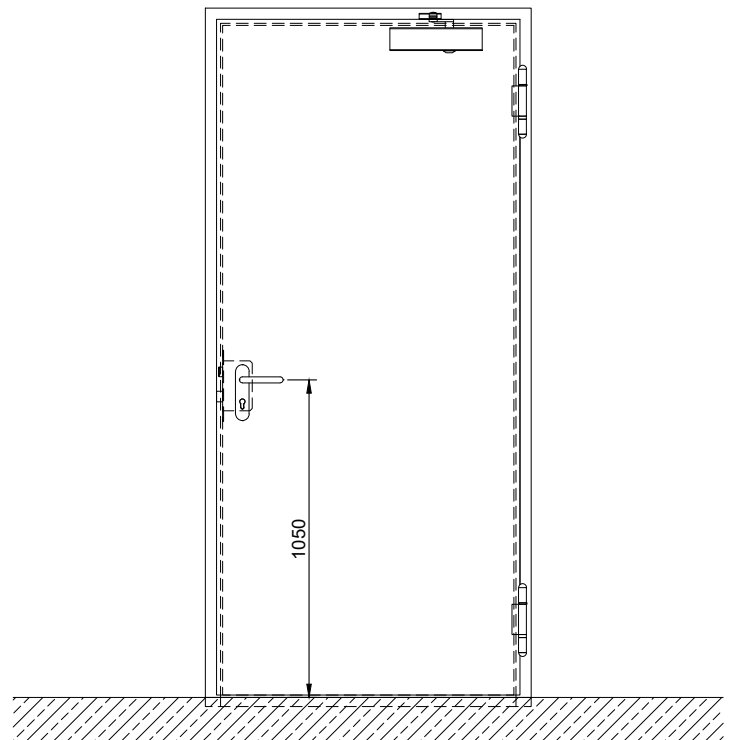
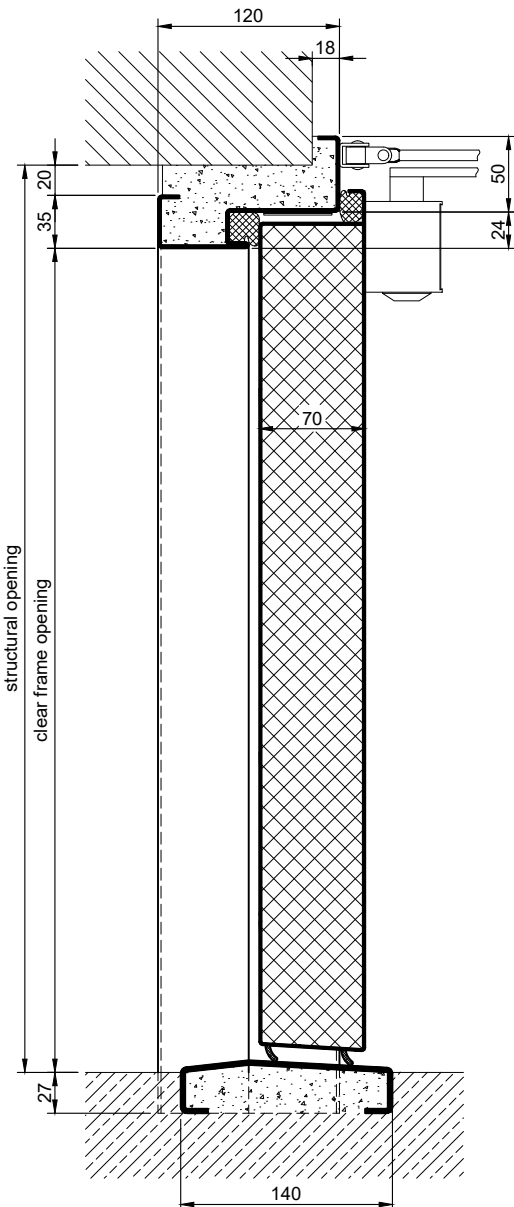
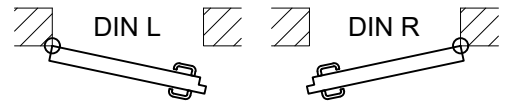
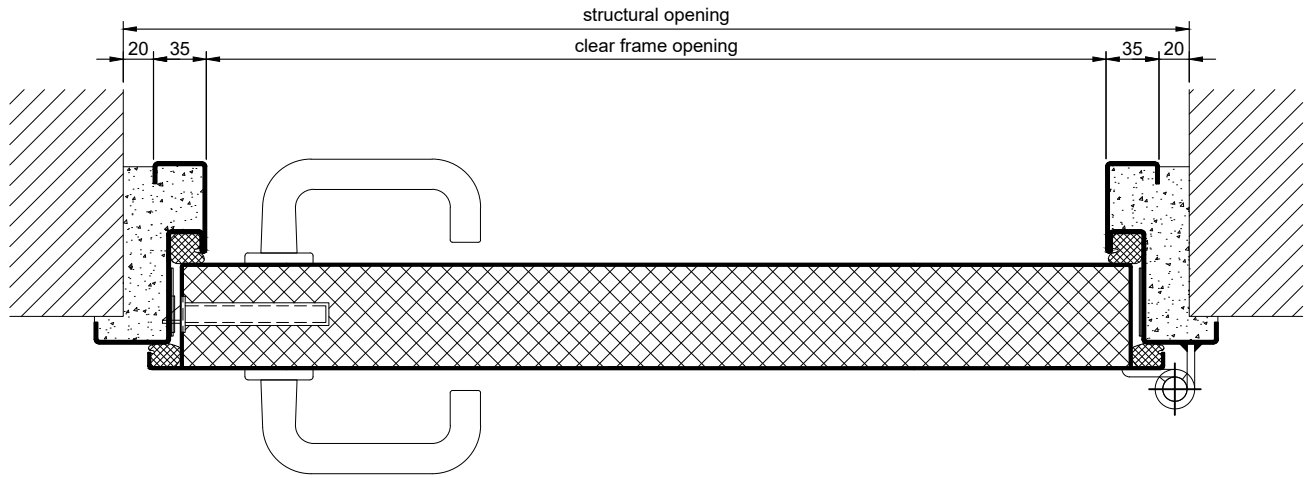
**Alternative: PLANE Line PL 901 SUPERIOR with flush mounted optics**

<b>Frame:</b>	3-sided circumferential rebated PLANE Line special corner frame for flush mounted optics on hinge side. With visible, black coated intumescent material in rebate. High-quality multi-chamber sealing profile adjustable fixed in the three-sided groove.
<b>Hinges:</b>	Concealed hinge system adjustable in three dimensions.
<b>Door Closer:</b>	Concealed slide rail door closer system acc. to EN 1154 integrated in frame and door leaf.

**Supplementary Equipment**

<b>Glazing:</b>	F90 fire-protective double glazing two-sided fixed with profiled and visible screwed steel glazing bars. Minimum border 125 mm on side and top, base 300 mm. Sound insulation $R_{w,P}$ max. 50dB
<b>Stainless Steel:</b>	Material 1.4301 (V2A) or 1.4404 (V4A), Surface mill finish or brushed.
<b>BUCHELE DELUXE:</b>	The exclusive surface coating.

### BASIC - Version

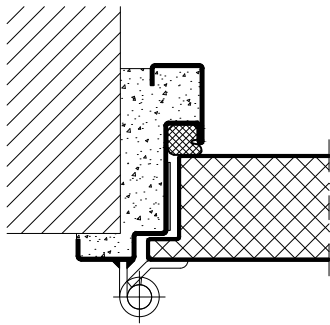


1.41.7 PLANE LINE PL 901-54DB\_EN

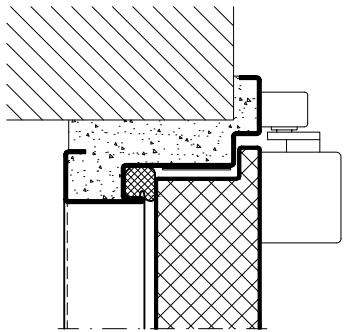
technical modifications reserved - edition 05/2024

### PREMIUM Version

construction hinges

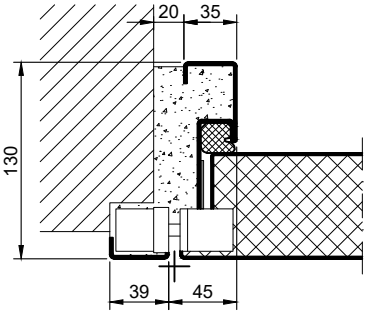


slide rail door closer

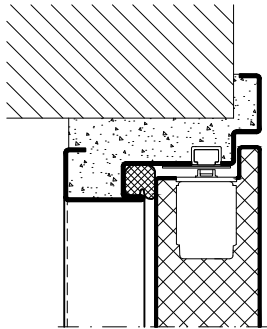


### SUPERIOR Version

concealed hinges

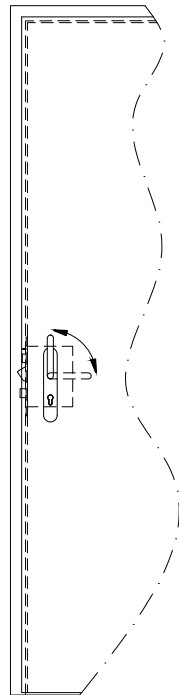


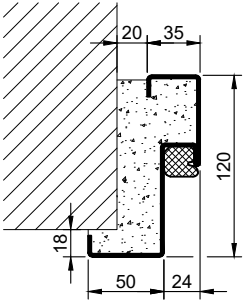
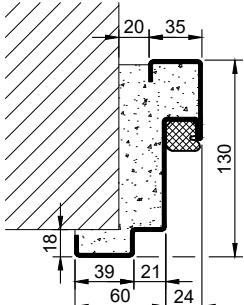
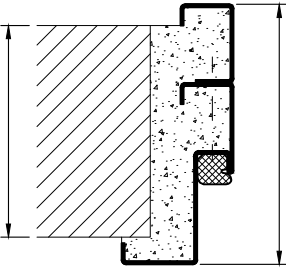
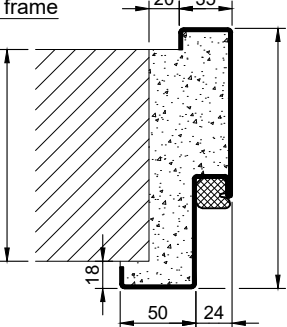
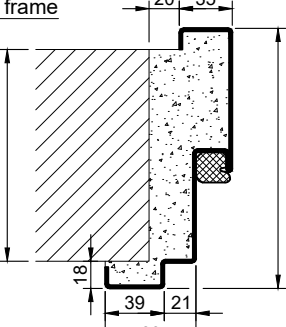
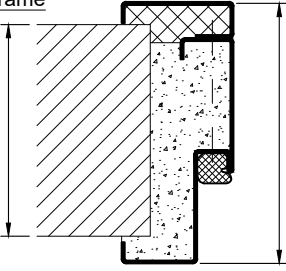
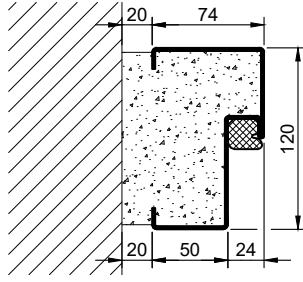
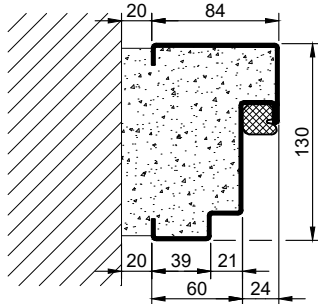
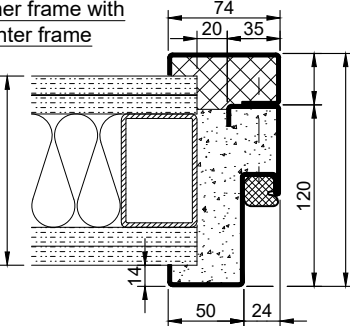
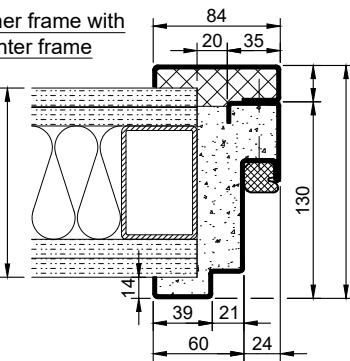
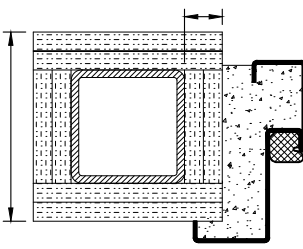
integrated door closer



### Options

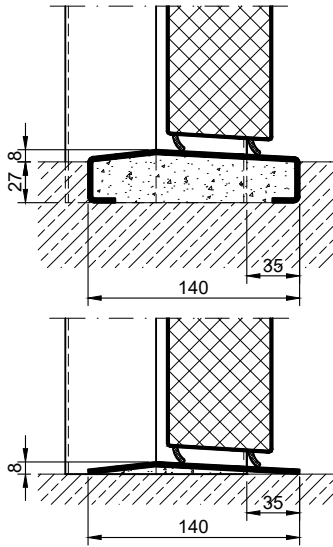
Buchele wedge latch lock



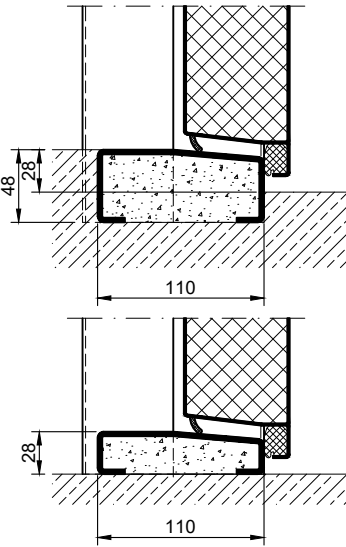
Frames BASIC	Frames PREMIUM/SUPERIOR	Variants (illustration BASIC)
<p>corner frame</p> 	<p>corner frame</p> 	<p>corner frame with additional frame</p> 
<p>encasing frame</p> 	<p>encasing frame</p> 	<p>encasing frame with counter frame</p> 
<p>block frame</p> 	<p>block frame</p> 	
<p>corner frame with counter frame</p> 	<p>corner frame with counter frame</p> 	<p>corner frame at support / pillar</p> 

### Thresholds

hump sill



half sill



full sill

